



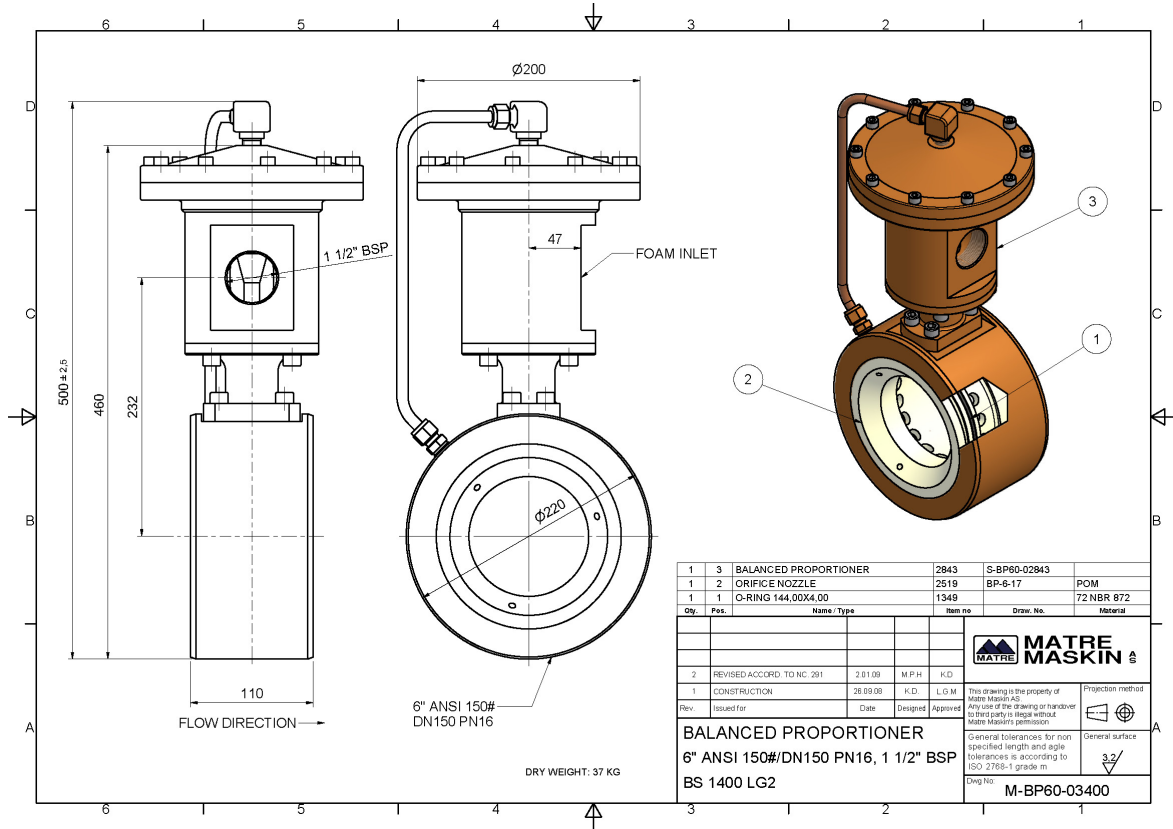
MATRE MASKIN AS

N-5420 RUBBESTADNESET, NORWAY
 Tlf. : +47 534 27744 Fax. : +47 534 27892
 E-mail : company@matre.no www.matre.no

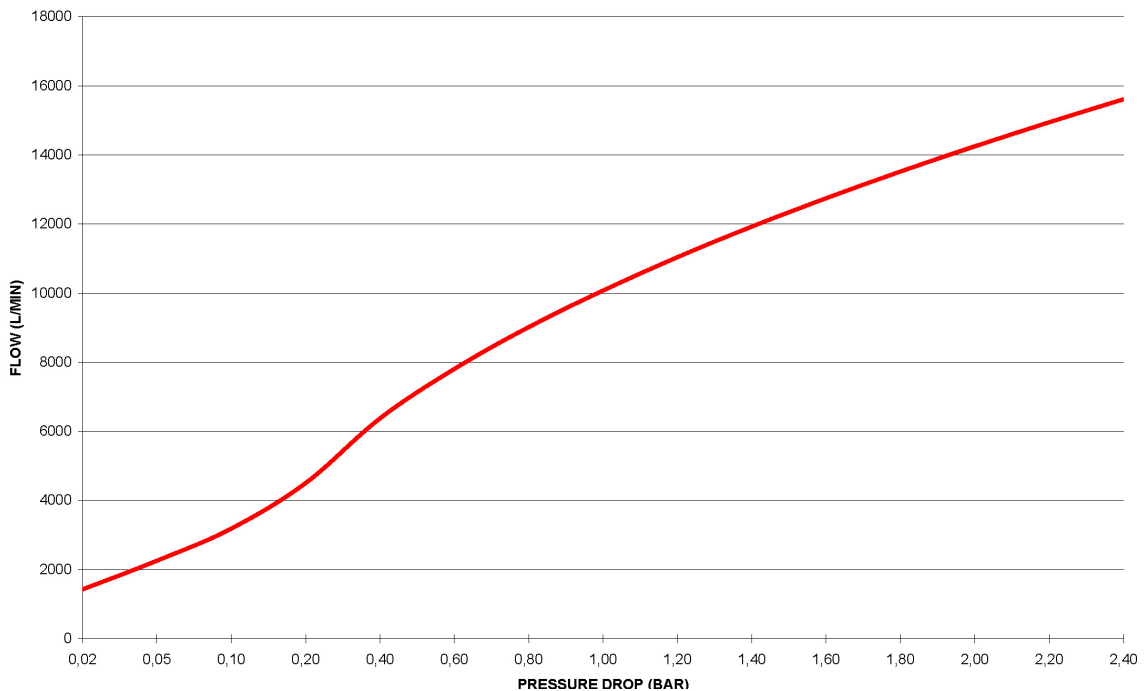
DATA SHEET

BALANCED PROPORTIONER M-BP60

STANDARD DESIGN



CAPACITY





BALANCED PROPORTIONER M-BP60

Characteristics	Standard	Options
Material	BS 1400 LG2	BS 1400 AB2 AISI 316 Titanium Gr2 6Mo
Interface for water supply	DN 150 PN 16 6" ANSI 16.5 150 lb	Special design for other interfaces
Interface for foam supply	1 1/2" BSPP Female	1 1/2" and upwards using adaptors for any thread or flange. 1 1/2" SAE 3000 psi interface.
Design pressure	20 bar	
Test pressure	30 bar	
Flow range at maximum ΔP 2 bar	1400 – 14000 l/min (<11500 l/min @3%)	Special design for other flow rates
Water pressure range	5-19 bar	
Foam pressure range	1-10 bar higher than the water pressure. Limited to 20 bar	Higher pressure difference between water and foam.
Insertion rate	1% Tolerances 0% - +30% 3% Tolerances 0% - +30%	Insertion rate according to client specification limited to a maximum foam flow of 350 l/min @ 1 1/2" inlet or 600 l/min @ 2" inlet Tolerances ± 10%
Check valve in foam port		Available in all materials and with all interfaces mentioned above.
Activating / closing valve in foam port		A wide range of valves for opening and closing foam supply automatic or activated with or without positive feedback for valve position.
Variable insertion rate		Valve for selection of insert rate 1%, 3% and 6%. The valve can be manual or remote operated.
Weight	37 kg	
Installation requirements	Straight pipe minimum 3 x DN at inlet. Outlet piping to same specification as inlet, but no requirements for straight pipe length.	

ORIENTATION OF FOAM CONNECTION

