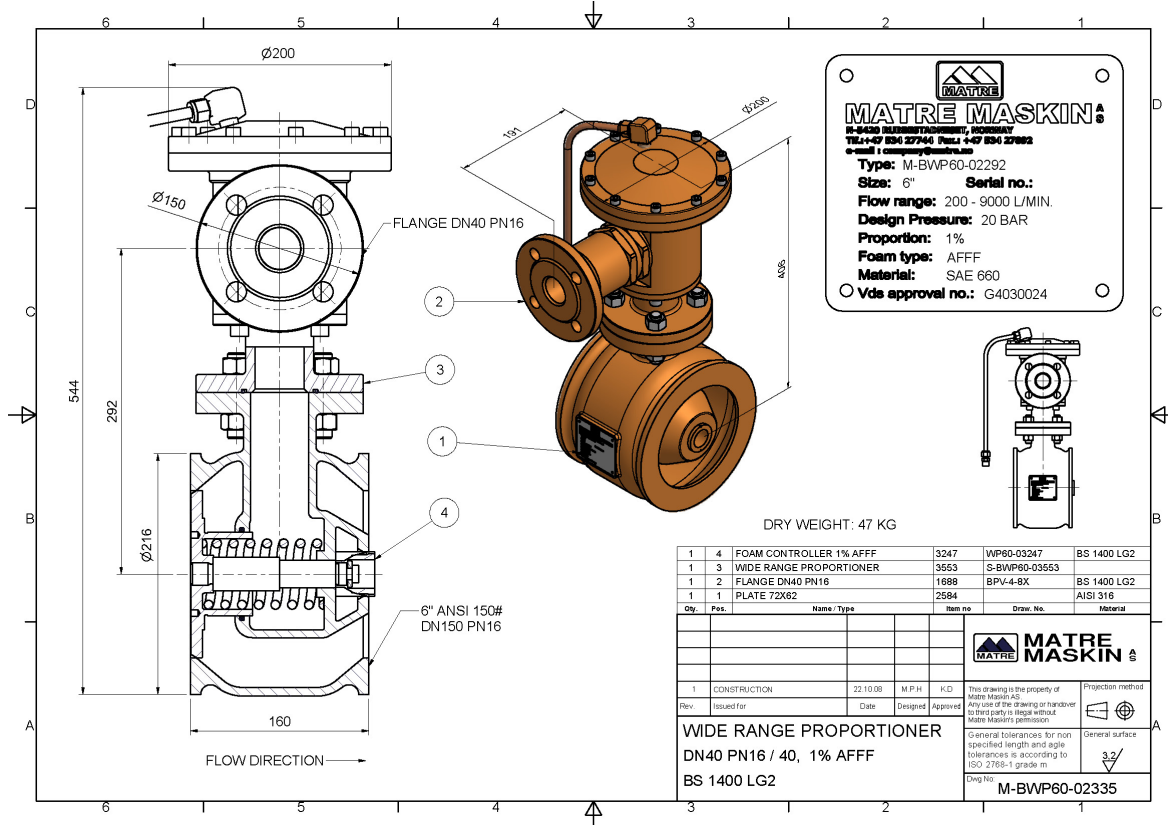




### WIDE RANGE BALANCED PROPORTIONER M-BWP60

#### STANDARD DESIGN



Characteristics	Standard	Options
Material	BS 1400 LG2	
Interface for water supply	6" ANSI B16.5 150 lb DN 150 PN16	
Interface for foam supply	DN40 PN16	1 1/2" ANSI B16.5 150lb
Check valve in foam port	1 1/2" BS1400 LG2	
Design pressure	16 bar	20 bar (not VdS)
Test pressure	24 bar	30 bar (not VdS)
Flow range	100-9000 l/min	
Water pressure range	5-16 bar	5-19 bar (not VdS)
Foam pressure range	1-10 bar higher than the water pressure. Limited to 17 bar	Max 20 bar (not VdS)
Insertion	1% Tolerances 0% - +30% AFFF (VDS) 2% Tolerances 0% - +30% AFFF (VDS) 3% Tolerances 0% - +30% AFFF (VDS) 3% Tolerances 0% - +30% ARC (VDS)	6% (limited flow to max 4000 l/min)
Weight	47 kg	
Installation requirements	Straight pipe minimum 3 x DN at inlet. Outlet piping to same specification as inlet, but no requirements for straight pipe length.	