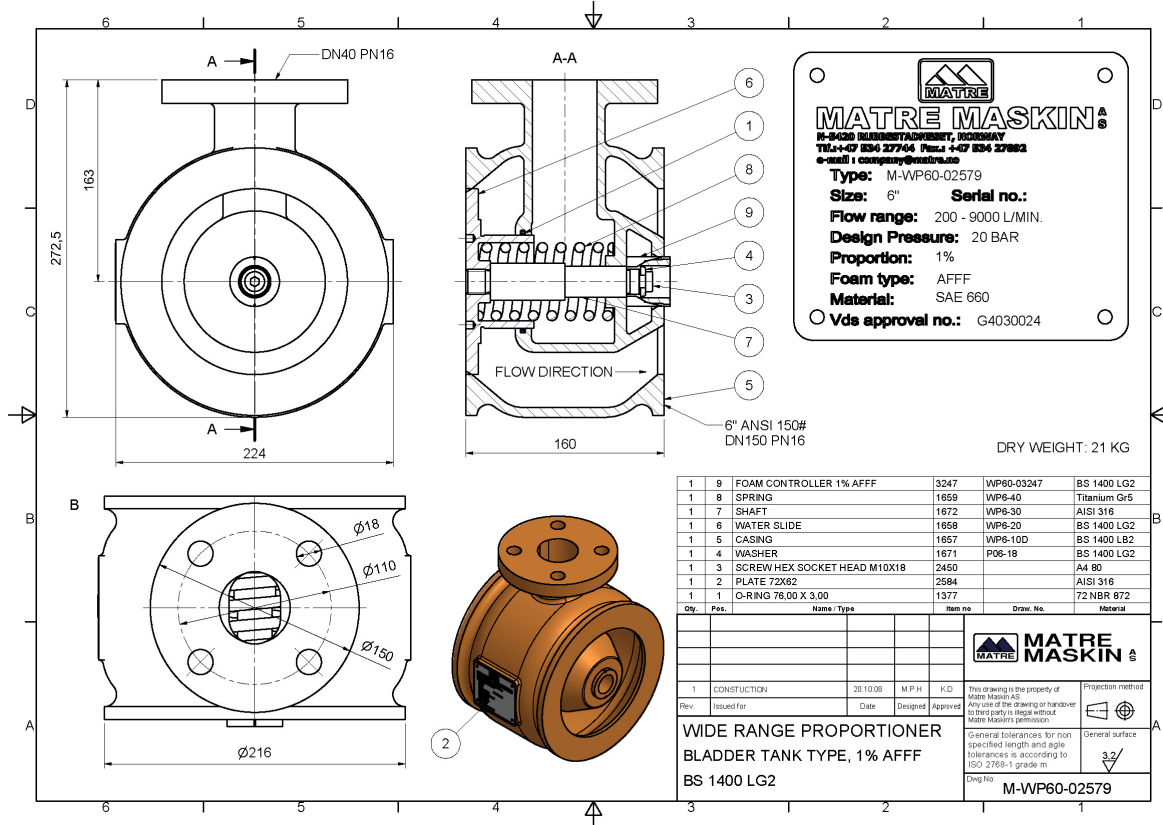




WIDE RANGE PROPORTIONER M-WP60

STANDARD DESIGN



Characteristics	Standard	Options
Material	BS 1400 LG2	
Interface for water supply	6" ANSI B16.5 150 lb DN 150 PN16	
Interface for foam supply	DN40 PN16	
Design pressure	16 bar	20 bar (not Vds)
Test pressure	24 bar	30 bar (not Vds)
Flow range	100-9000 l/min	
Water pressure range	5-16 bar	5 -19 bar
Bladder tank arrangement	Requires same pressure on foam liquid and water inlet pressure.	
Insertion	1% Tolerances 0% - +30% AFFF (VDS) 2% Tolerances 0% - +30% AFFF 3% Tolerances 0% - +30% AFFF (VDS) 3% Tolerances 0% - +30% ARC (VDS)	6% (limited flow to max 4000 l/min)
Weight	21 kg	
Installation requirements	Straight pipe minimum 3 x DN at inlet. Outlet piping to same specification as inlet, but no requirements for straight pipe length.	